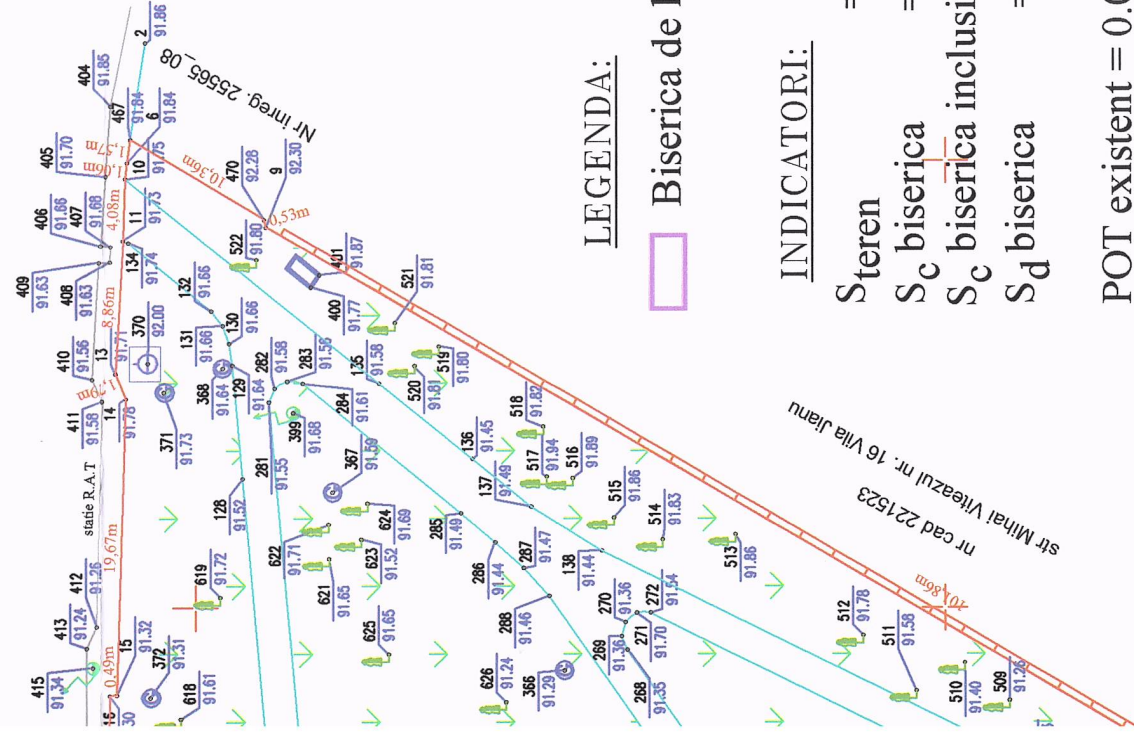


INVENTAR DE COORDONATE ZONA STUDIATA

Nr. Pct.	Coordonate pct.de contur		Lungimi latuni D(i,i+1)
	X [m]	Y [m]	
9	314195.284	403475.294	0.535
470	314195.431	403475.808	10.358
467	314204.335	403481.101	1.574
6	314204.575	403479.545	1.064
10	314204.693	403478.488	4.082
11	314204.841	403474.409	8.855
13	314205.339	403465.568	1.794
14	314204.658	403463.908	19.668
15	314205.234	403444.248	0.494
16	314205.726	403444.208	6.679
17	314205.790	403437.529	9.057
18	314205.721	403428.472	10.545
19	314205.455	403417.930	5.397
20	314205.194	403412.539	6.833
21	314204.621	403405.730	9.776
22	314203.467	403396.022	2.218
23	314203.170	403398.824	9.624
24	314201.899	403384.284	7.282
25	314200.828	403377.081	8.159
26	314199.510	403369.029	42.443
27	314191.734	403327.304	2.815
28	314191.142	403324.552	3.735
29	314188.839	403321.612	5.207
30	314185.198	403317.890	4.211
31	314181.953	403315.206	2.855
32	314179.531	403313.684	1.035
33	314178.549	403313.366	1.102
34	314177.465	403313.567	3.115
35	314174.406	403314.155	0.296
36	314174.112	403314.186	52.803
37	314124.382	403331.936	3.196
38	314121.448	403333.203	4.049
39	314118.062	403335.424	4.003
40	314115.191	403338.214	3.810
41	314112.880	403341.243	1.020
42	314112.421	403342.154	0.716
469	314112.213	403342.839	0.717
43	314112.012	403343.527	3.672
44	314111.088	403347.081	26.685
45	314106.299	403373.333	0.934
46	314106.998	403373.952	1.640
47	314106.742	403375.572	3.378
48	314106.091	403378.887	4.422
49	314105.301	403383.238	0.983
50	314104.444	403383.740	14.580
51	314101.759	403398.071	0.411
52	314101.827	403398.476	5.759
53	314100.814	403404.145	2.825
54	314100.212	403406.905	1.852
55	314100.043	403408.749	1.720
56	314100.172	403410.464	1.500
57	314100.514	403411.925	9.665
1	314102.559	403421.371	5.407
465	314107.233	403424.089	101.857
S = 12140mp P=448.426m			

LEGENDA:

□ Biserica de lemn propusa

INDICATORI:

S_{steren} = 12140.00 mp
 S_{C biserica} = 46.23 mp
 S_{C biserica} inclusiv parament piatra soclu = 50 mp
 S_{D biserica} = 46.23 mp

POT existent = 0.00%
 CUT existent = 0.00

POT propus = 0.38%
 CUT propus = 0.004

Suprafata zone verzi = 10105.23mp
 Suprafata alei = 1902.44mp
 Suprafata mobilier urban si monumente de for public existente = 132.33mp

09.11.2020

DOCUMENTATIE TEHNICA PENTRU
 "RELOCARE SI RESTAURARE BISERICA DIN LEMN DIN
 POCRUJA -- Etapa II : restaurare si relocare în Municipiul Craiova"

Scara 1:500

Suprafata masurata a imobilului (mp)

Adresa imobil -INTRA VILAN-

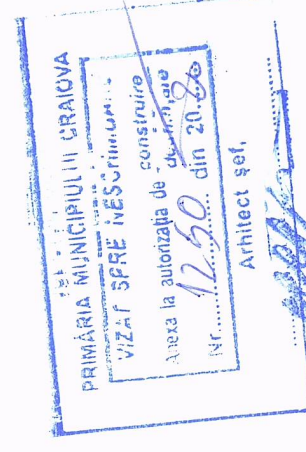
12140

str. Mihai Viteazul, nr.32 - Gradina Mihai Bravu

ARH. SEF
 GABRIELA MIEREA DIRECTIA

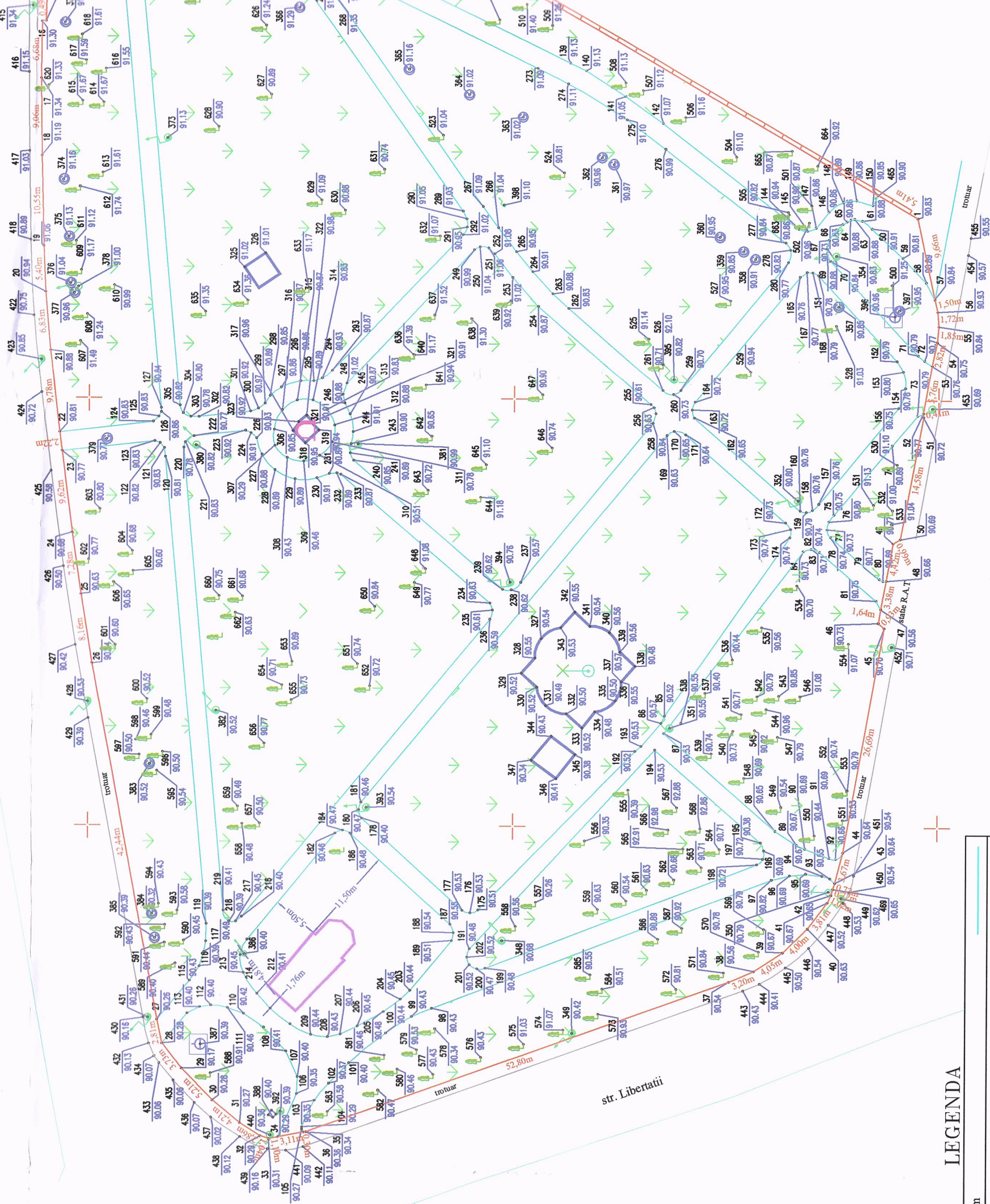
Unitate administrativ Teritoriala (UAT)

CRAIOVA





nr. cad 203838
str. Brestei



str. Mihai Viteazul

str. Libertatii

LEGENDA

	Drum
	Limita Proprietate
	Alee
	Trotuar
	Mobilier urban si monumente de for public existente
	Stalp Iluminat
	Retea apa
	Aerisoritor gaze
	Monument
	Copac
	Fantana
	Fantana arteziana
	Spatiu verde