

**MUNICIPIUL CRAIOVA**  
**CONSILIUL LOCAL AL MUNICIPIULUI CRAIOVA**

**HOTĂRÂREA NR. 255**

**privind modificarea organigramei și statului de funcții ale Spitalului Clinic de Boli Infecțioase și Pneumoftiziologie „Victor Babeș” Craiova, pentru anul 2015**

Consiliul Local al Municipiului Craiova întrunit în ședința ordinară din data de 30.07.2015;

Având în vedere raportul nr.107995/2015 întocmit de Serviciul Resurse Umane prin care se propune modificarea organigramei și statului de funcții ale Spitalului Clinic de Boli Infecțioase și Pneumoftiziologie „Victor Babeș” Craiova, pentru anul 2015 și rapoartele comisiilor de specialitate ale Consiliului Local al Municipiului Craiova nr.221, 222, 223, 225 și 226/2015;

În conformitate cu prevederile Legii nr.95/2006 privind reforma în domeniul sănătății, modificată și completată, Legii nr.53/2003, republicată, privind Codul Muncii, Ordinului nr.1224/2010 privind aprobarea normativelor de personal pentru asistența medicală spitalicească, precum și pentru modificarea și completarea Ordinului ministrului sănătății publice nr.1.778/2006 privind aprobarea normativelor de personal;

În temeiul art.36 alin.2 lit.a coroborat cu alin.3 lit.b, art.45 alin.1, art.61 alin.2 și art.115, alin.1, lit.b din Legea nr.215/2001, republicată, privind administrația publică locală;

**HOTĂRĂȘTE:**

- Art.1.** Se aprobă modificarea organigramei și statului de funcții ale Spitalului Clinic de Boli Infecțioase și Pneumoftiziologie „Victor Babeș” Craiova, pentru anul 2015, conform anexelor nr.1 și 2 care fac parte integrantă din prezenta hotărâre.
- Art.2.** Pe data prezentei hotărâri, se modifică în mod corespunzător Hotărârea Consiliului Local al Municipiului Craiova nr.93/2015.
- Art.3.** Primarul Municipiului Craiova, prin aparatul de specialitate: Serviciul Administrație Publică Locală, Serviciul Resurse Umane și Spitalul Clinic de Boli Infecțioase și Pneumoftiziologie „Victor Babeș” Craiova vor aduce la îndeplinire prevederile prezentei hotărâri.

**PREȘEDINTE DE ȘEDINȚĂ,**

**Ionel PANĂ**

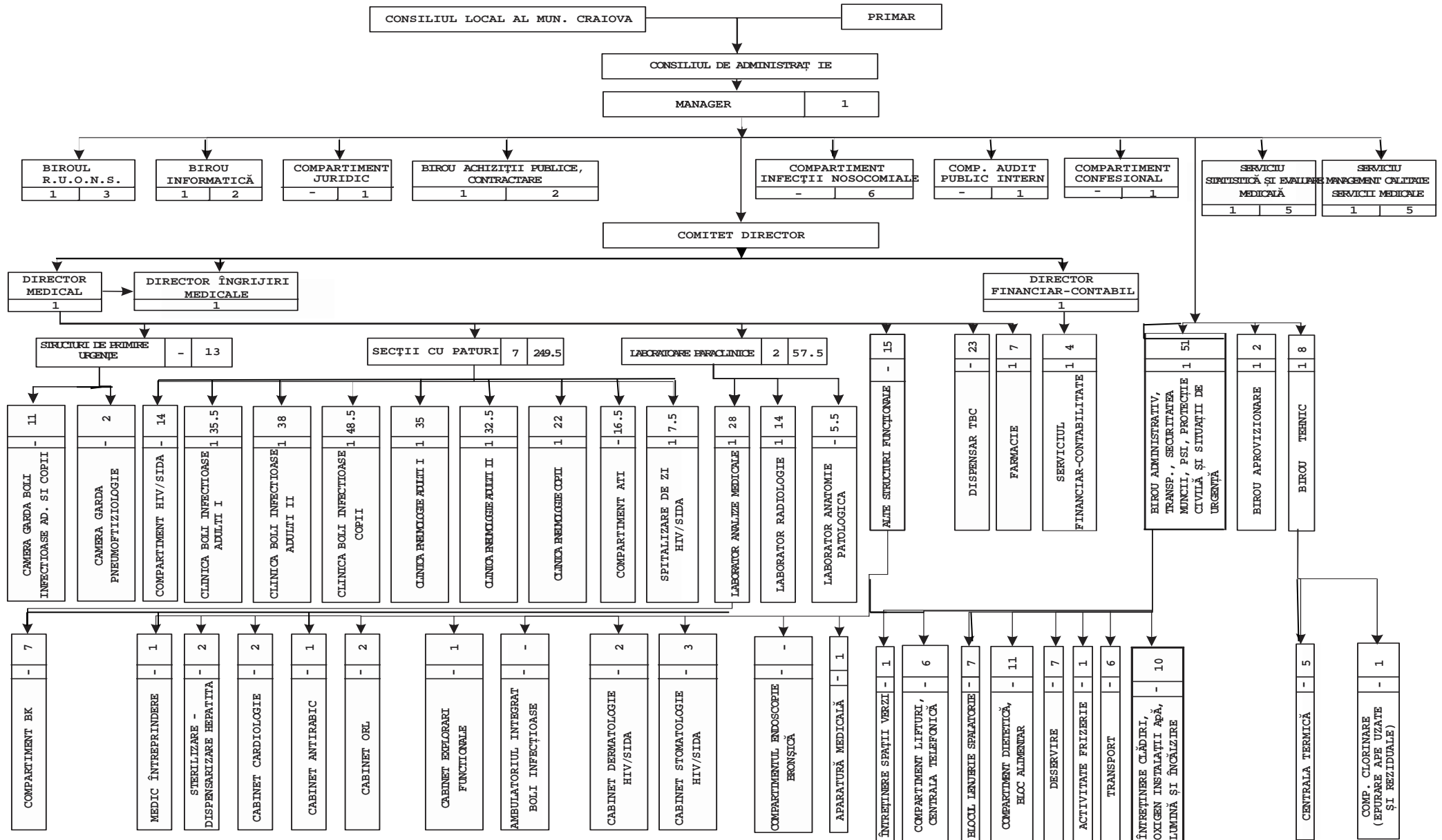
**CONTRASEMNEAZĂ,**

**PT. SECRETAR,**

**Ovidiu MISCHIANU**



ORGANIGRAMA SPITALULUI CLINIC DE BOLI INFECȚIOASE  
ȘI PNEUMOTIZIOLOGIE „VICTOR BABEȘ“ CRAIOVA PENTRU ANUL 2015



STAT DE FUNCȚII  
AL SPITALULUI CLINIC DE BOLI INFECȚIOASE ȘI PNEUMOFTIZIOLOGIE "VICTOR BABEȘ" CRAIOVA

Nr. Crt.	FUNCTIA,GRAD SAU TREAPTA	Nivel studii	Cuantiu post	Grad sau Treapta	Numar posturi aprobrate	Numar posturi ocupate	Numar posturi vacante
<b>CONDUCEREA SPITALULUI</b>							
1,0	MANAGER (MEDIC)	S	1,0	PRIMAR	1,0	1,0	0,0
2,0	DIRECTOR MEDICAL (MEDIC)	S	1,0	PRIMAR	1,0	0,0	1,0
3,0	DIRECTOR FIN.CONTABIL (ECONOMIST)	S	1,0	IA	1,0	0,0	1,0
4,0	DIRECTOR INGRIJIRI MEDICALE (AS MED PR.)	S	1,0	PRINCIPAL	1,0	1,0	0,0
<b>TOTAL CONDUCERE</b>			<b>4,0</b>		<b>4,0</b>	<b>2,0</b>	<b>2,0</b>
<b>COMPARTIMENT INFECȚII NOSOCOMIALE</b>							
5,0	MEDIC	S	1,0	PRIMAR	1,0	1,0	0,0
<b>TOTAL PERSONAL SANITAR</b>			<b>1,0</b>		<b>1,0</b>	<b>1,0</b>	<b>0,0</b>
6,0	ASISTENT MEDICAL	PL	1,0	PRINCIPAL	1,0	1,0	0,0
7,0	ASISTENT MEDICAL	PL	1,0	PRINCIPAL	1,0	1,0	0,0
8,0	ASISTENT MEDICAL	PL	1,0	PRINCIPAL	1,0	1,0	0,0
9,0	ASISTENT MEDICAL	PL	1,0	PRINCIPAL	1,0	1,0	0,0
<b>TOTAL PERSONAL MEDIU</b>			<b>4,0</b>		<b>4,0</b>	<b>4,0</b>	<b>0,0</b>
10,0	AGEN DDD	M	1,0		1,0	1,0	0,0
<b>TOTAL PERSONAL AUXILIAR</b>			<b>1,0</b>		<b>1,0</b>	<b>1,0</b>	<b>0,0</b>
<b>CAMERA DE GARDA BOLI INFECȚIOASE</b>							
11,0	ASISTENT MEDICAL	PL	1,0	PRINCIPAL	1,0	1,0	0,0
12,0	ASISTENT MEDICAL	S	1,0	PRINCIPAL	1,0	1,0	0,0
13,0	ASISTENT MEDICAL	S	1,0	PRINCIPAL	1,0	1,0	0,0
14,0	ASISTENT MEDICAL	PL	1,0	PRINCIPAL	1,0	1,0	0,0
15,0	ASISTENT MEDICAL	S	1,0	PRINCIPAL	1,0	1,0	0,0
16,0	ASISTENT MEDICAL	PL	1,0	PRINCIPAL	1,0	1,0	0,0
17,0	ASISTENT MEDICAL	PL	1,0	PRINCIPAL	1,0	1,0	0,0
<b>TOTAL ASISTENTE 3 TURE CAMERA DE GARDA</b>			<b>7,0</b>		<b>7,0</b>	<b>7,0</b>	<b>0,0</b>
18,0	INFIRMIERA	G	1,0		1,0	1,0	0,0
19,0	INFIRMIERA	G	1,0		1,0	1,0	0,0
<b>TOTAL INFIRMIERE CAMERA DE GARDA</b>			<b>2,0</b>		<b>2,0</b>	<b>2,0</b>	<b>0,0</b>
20,0	INGRIJITOARE	G	1,0		1,0	1,0	0,0
21,0	INGRIJITOARE	G	1,0		1,0	1,0	0,0
<b>TOTAL INGRIJITOARE CAMERA DE GARDA</b>			<b>2,0</b>		<b>2,0</b>	<b>2,0</b>	<b>0,0</b>
<b>CAMERA GARDA PNF</b>							
22,0	ASISTENT MEDICAL	PL	1,0	PRINCIPAL	1,0	1,0	0,0
23,0	ASISTENT MEDICAL	PL	1,0	PRINCIPAL	1,0	1,0	0,0
<b>TOTAL PERS.SANITAR MEDIU</b>			<b>2,0</b>		<b>2,0</b>	<b>2,0</b>	<b>0,0</b>
<b>CLINICA DE BOLI INFECȚIOASE ADULTI I - 65PATURI</b>							
24,0	SEF SECTIE - MEDIC sef lucr.	S	1,0	PRIMAR	1,0	1,0	0,0
25,0	MEDIC	S	1,0	PRIMAR	1,0	1,0	0,0
26,0	MEDIC	S	1,0	PRIMAR	1,0	1,0	0,0
26,5	MEDIC - As. Univ.	S	0,5	PRIMAR	0,5	0,5	0,0
27,5	MEDIC	S	1,0	PRIMAR	1,0	1,0	0,0
28,5	MEDIC	S	1,0	PRIMAR	1,0	1,0	0,0
<b>TOTAL MEDICI</b>			<b>5,5</b>		<b>5,5</b>	<b>5,5</b>	<b>0,0</b>
29,5	ASISTENT MEDICAL SEF	S	1,0	PRINCIPAL	1,0	0,0	1,0
30,5	ASISTENT MEDICAL	PL	1,0		1,0	1,0	0,0
31,5	ASISTENT MEDICAL	PL	1,0	PRINCIPAL	1,0	1,0	0,0
32,5	ASISTENT MEDICAL	S	1,0	PRINCIPAL	1,0	1,0	0,0
33,5	ASISTENT MEDICAL	M	1,0	PRINCIPAL	1,0	1,0	0,0
34,5	ASISTENT MEDICAL	S	1,0		1,0	1,0	0,0
35,5	ASISTENT MEDICAL	PL	1,0	PRINCIPAL	1,0	1,0	0,0
36,5	ASISTENT MEDICAL	PL	1,0	PRINCIPAL	1,0	1,0	0,0
37,5	ASISTENT MEDICAL	PL	1,0	PRINCIPAL	1,0	1,0	0,0
38,5	ASISTENT MEDICAL	S	1,0	PRINCIPAL	1,0	1,0	0,0
39,5	ASISTENT MEDICAL	PL	1,0	PRINCIPAL	1,0	1,0	0,0
40,5	ASISTENT MEDICAL	PL	1,0	PRINCIPAL	1,0	1,0	0,0
41,5	ASISTENT MEDICAL	PL	1,0	PRINCIPAL	1,0	1,0	0,0
42,5	ASISTENT MEDICAL	PL	1,0	PRINCIPAL	1,0	1,0	0,0
43,5	ASISTENT MEDICAL	PL	1,0	PRINCIPAL	1,0	1,0	0,0
44,5	ASISTENT MEDICAL	PL	1,0	GENERALIST	1,0	1,0	0,0
45,5	ASISTENT MEDICAL	PL	1,0	DEBUTANT	1,0	0,0	1,0
46,5	ASISTENT MEDICAL	PL	1,0	GENERALIST	1,0	0,0	1,0
47,5	ASISTENT MEDICAL	PL	1,0		1,0	1,0	0,0
<b>TOTAL PERS.MEDIU TREI TURE</b>			<b>19,0</b>		<b>19,0</b>	<b>16,0</b>	<b>3,0</b>

Nr. Crt.	FUNCTIA,GRAD SAU TREAPTA	Nivel studii	Cuatum post	Grad sau Treapta	Numar posturi aprobate	Numar posturi ocupate	Numar posturi vacante
48,5	REGISTRATOR MEDICAL	M	1,0	PRINCIPAL	1,0	0,0	1,0
<b>TOTAL PERS.MEDIU POST FIX</b>			<b>1,0</b>		<b>1,0</b>	<b>0,0</b>	<b>1,0</b>
49,5	INFIRMIERA	G	1,0		1,0	1,0	0,0
50,5	INFIRMIERA	G	1,0		1,0	1,0	0,0
51,5	INFIRMIERA	G	1,0		1,0	1,0	0,0
52,5	INFIRMIERA	G	1,0		1,0	1,0	0,0
53,5	INFIRMIERA	G	1,0		1,0	1,0	0,0
54,5	INFIRMIERA	G	1,0		1,0	1,0	0,0
55,5	INFIRMIERA	G	1,0		1,0	1,0	0,0
56,5	INFIRMIERA	G	1,0	DEBUTANT	1,0	0,0	1,0
57,5	INFIRMIERA	G	1,0		1,0	1,0	0,0
58,5	INFIRMIERA	G	1,0	DEBUTANT	1,0	0,0	1,0
<b>TOTAL INFIRMIERE</b>			<b>10,0</b>		<b>10,0</b>	<b>8,0</b>	<b>2,0</b>
59,5	INGRIJITOARE	G	1,0		1,0	1,0	0,0
<b>TOTAL INGRIJITOARE</b>			<b>1,0</b>		<b>1,0</b>	<b>1,0</b>	<b>0,0</b>
<b>COMPARTIMENT HIV/SIDA 15 PATURI</b>							
60,5	MEDIC	S	1,0	PRIMAR	1,0	1,0	0,0
<b>TOTAL MEDICI</b>			<b>1,0</b>		<b>1,0</b>	<b>1,0</b>	<b>0,0</b>
61,5	ASISTENT MEDICAL	S	1,0	PRINCIPAL	1,0	1,0	0,0
62,5	ASISTENT MEDICAL	S	1,0	PRINCIPAL	1,0	1,0	0,0
63,5	ASISTENT MEDICAL	S	1,0	PRINCIPAL	1,0	1,0	0,0
64,5	ASISTENT MEDICAL	PL	1,0	PRINCIPAL	1,0	1,0	0,0
65,5	ASISTENT MEDICAL	PL	1,0	PRINCIPAL	1,0	1,0	0,0
66,5	ASISTENT MEDICAL	PL	1,0	PRINCIPAL	1,0	1,0	0,0
67,5	ASISTENT MEDICAL	S	1,0	PRINCIPAL	1,0	1,0	0,0
<b>TOTAL PERSONAL 3 TURE</b>			<b>7,0</b>		<b>7,0</b>	<b>7,0</b>	<b>0,0</b>
68,5	INFIRMIERA	G	1,0		1,0	1,0	0,0
69,5	INFIRMIERA	G	1,0		1,0	1,0	0,0
70,5	INFIRMIERA	G	1,0		1,0	1,0	0,0
71,5	INFIRMIERA	G	1,0		1,0	1,0	0,0
72,5	INFIRMIERA	G	1,0		1,0	1,0	0,0
73,5	INFIRMIERA	G	1,0		1,0	1,0	0,0
<b>TOTAL INFIRMIERE</b>			<b>6,0</b>		<b>6,0</b>	<b>6,0</b>	<b>0,0</b>
<b>CLINICA BOLI INFECTIOASE ADULTI II - 65 PATURI</b>							
74,5	SEF SECTIE MEDIC - Conf. univ.	S	1,0	PRIMAR	1,0	1,0	0,0
75,5	MEDIC	S	1,0	PRIMAR	1,0	1,0	0,0
76,5	MEDIC	S	1,0	PRIMAR	1,0	1,0	0,0
77,5	MEDIC	S	1,0	PRIMAR	1,0	1,0	0,0
78,0	MEDIC - As. Univ	S	0,5	SPECIALIST	0,5	0,5	0,0
78,5	MEDIC - Sef lucr.	S	0,5	PRIMAR	0,5	0,5	0,0
<b>TOTAL MEDICI</b>			<b>5,0</b>		<b>5,0</b>	<b>5,0</b>	<b>0,0</b>
79,5	ASISTENT MEDICAL SEF	PL	1,0	PRINCIPAL	1,0	1,0	0,0
80,5	ASISTENT MEDICAL	PL	1,0	PRINCIPAL	1,0	1,0	0,0
81,5	ASISTENT MEDICAL	PL	1,0	PRINCIPAL	1,0	1,0	0,0
82,5	ASISTENT MEDICAL	PL	1,0	PRINCIPAL	1,0	1,0	0,0
83,5	ASISTENT MEDICAL	PL	1,0	PRINCIPAL	1,0	1,0	0,0
84,5	ASISTENT MEDICAL	PL	1,0	PRINCIPAL	1,0	1,0	0,0
85,5	ASISTENT MEDICAL	PL	1,0	PRINCIPAL	1,0	1,0	0,0
86,5	ASISTENT MEDICAL	S	1,0	PRINCIPAL	1,0	1,0	0,0
87,5	ASISTENT MEDICAL	PL	1,0	PRINCIPAL	1,0	1,0	0,0
88,5	ASISTENT MEDICAL	PL	1,0	PRINCIPAL	1,0	1,0	0,0
89,5	ASISTENT MEDICAL	PL	1,0	PRINCIPAL	1,0	1,0	0,0
90,5	ASISTENT MEDICAL	S	1,0	PRINCIPAL	1,0	1,0	0,0
91,5	ASISTENT MEDICAL	PL	1,0	GENERALIST	1,0	1,0	0,0
92,5	ASISTENT MEDICAL	S	1,0	PRINCIPAL	1,0	1,0	0,0
93,5	ASISTENT MEDICAL	S	1,0	PRINCIPAL	1,0	1,0	0,0
94,5	ASISTENT MEDICAL	S	1,0		1,0	1,0	0,0
95,5	ASISTENT MEDICAL	S	1,0	PRINCIPAL	1,0	1,0	0,0
96,5	ASISTENT MEDICAL	PL	1,0	GENERALIST	1,0	0,0	1,0
97,5	ASISTENT MEDICAL	S	1,0	PRINCIPAL	1,0	1,0	0,0
<b>TOTAL ASISTENTE 3 TURE</b>			<b>19,0</b>		<b>19,0</b>	<b>18,0</b>	<b>1,0</b>
98,5	REGISTRATOR MEDICAL	M	1,0	PRINCIPAL	1,0	1,0	0,0
<b>TOTAL PERS.MEDIU POST FIX</b>			<b>1,0</b>		<b>1,0</b>	<b>1,0</b>	<b>0,0</b>
99,5	INFIRMIERA	G	1,0		1,0	1,0	0,0
100,5	INFIRMIERA	G	1,0		1,0	1,0	0,0
101,5	INFIRMIERA	G	1,0		1,0	1,0	0,0
102,5	INFIRMIERA	G	1,0		1,0	1,0	0,0
103,5	INFIRMIERA	G	1,0		1,0	1,0	0,0
104,5	INFIRMIERA	G	1,0		1,0	1,0	0,0
105,5	INFIRMIERA	G	1,0		1,0	1,0	0,0
106,5	INFIRMIERA	G	1,0		1,0	1,0	0,0
107,5	INFIRMIERA	G	1,0		1,0	1,0	0,0
108,5	INFIRMIERA	G	1,0		1,0	1,0	0,0
109,5	INFIRMIERA	G	1,0		1,0	1,0	0,0
110,5	INFIRMIERA	G	1,0	DEBUTANT	1,0	0,0	1,0

Nr. Crt.	FUNCTIA,GRAD SAU TREAPTA	Nivel studii	Cuatum post	Grad sau Treapta	Numar posturi aprobate	Numar posturi ocupate	Numar posturi vacante
<b>TOTAL INFIRMIERE</b>			<b>12,0</b>		<b>12,0</b>	<b>11,0</b>	<b>1,0</b>
111.5	INGRIJITOARE	G	1,0		1,0	1,0	0,0
112.5	INGRIJITOARE	G	1,0		1,0	1,0	0,0
<b>TOTAL INGRJITOARE</b>			<b>2,0</b>		<b>2,0</b>	<b>2,0</b>	<b>0,0</b>
<b>CLINICA BOLI INFECTIOASE COPII - 60 PATURI</b>							
113.5	SEF SECTIE - MEDIC	S	1,0	PRIMAR	1,0	0,0	1,0
114.5	MEDIC	S	1,0	PRIMAR	1,0	1,0	0,0
115.5	MEDIC	S	1,0	PRIMAR	1,0	1,0	0,0
116.5	MEDIC	S	1,0	PRIMAR	1,0	1,0	0,0
117.0	MEDIC - As. Univ	S	0,5	SPECIALIST	0,5	0,5	0,0
118.0	MEDIC	S	1,0	SPECIALIST	1,0	1,0	0,0
<b>TOTAL MEDICI</b>			<b>5,5</b>		<b>5,5</b>	<b>4,5</b>	<b>1,0</b>
119.0	ASISTENT MEDICAL SEF	S	1,0	PRINCIPAL	1,0	0,0	1,0
120.0	ASISTENT MEDICAL	PL	1,0	PRINCIPAL	1,0	1,0	0,0
121.0	ASISTENT MEDICAL	PL	1,0	DEBUTANT	1,0	0,0	1,0
122.0	ASISTENT MEDICAL	PL	1,0		1,0	1,0	0,0
123.0	ASISTENT MEDICAL	S	1,0	PRINCIPAL	1,0	1,0	0,0
124.0	ASISTENT MEDICAL	PL	1,0	PRINCIPAL	1,0	1,0	0,0
125.0	ASISTENT MEDICAL	PL	1,0	PRINCIPAL	1,0	1,0	0,0
126.0	ASISTENT MEDICAL	S	1,0	PRINCIPAL	1,0	1,0	0,0
127.0	ASISTENT MEDICAL	PL	1,0	PRINCIPAL	1,0	1,0	0,0
128.0	ASISTENT MEDICAL	PL	1,0		1,0	1,0	0,0
129.0	ASISTENT MEDICAL	PL	1,0	PRINCIPAL	1,0	1,0	0,0
130.0	ASISTENT MEDICAL	PL	1,0	PRINCIPAL	1,0	1,0	0,0
131.0	ASISTENT MEDICAL	PL	1,0	PRINCIPAL	1,0	1,0	0,0
132.0	ASISTENT MEDICAL	PL	1,0	PRINCIPAL	1,0	1,0	0,0
133.0	ASISTENT MEDICAL	PL	1,0	PRINCIPAL	1,0	1,0	0,0
134.0	ASISTENT MEDICAL	PL	1,0	PRINCIPAL	1,0	1,0	0,0
135.0	ASISTENT MEDICAL	PL	1,0		1,0	1,0	0,0
136.0	ASISTENT MEDICAL	PL	1,0	PRINCIPAL	1,0	1,0	0,0
137.0	ASISTENT MEDICAL	S	1,0	GENERALIST	1,0	1,0	0,0
138.0	ASISTENT MEDICAL	PL	1,0	GENERALIST	1,0	1,0	0,0
139.0	ASISTENT MEDICAL	S	1,0	PRINCIPAL	1,0	1,0	0,0
140.0	ASISTENT MEDICAL	PL	1,0	DEBUTANT	1,0	0,0	1,0
<b>TOTAL PERS.MED.TREI TURE</b>			<b>22,0</b>		<b>22,0</b>	<b>19,0</b>	<b>3,0</b>
141.0	ASISTENT MEDICAL	PL	1,0	PRINCIPAL	1,0	1,0	0,0
142.0	ASISTENT MEDICAL	S	1,0	PRINCIPAL	1,0	1,0	0,0
143.0	ASISTENT MEDICAL	PL	1,0	PRINCIPAL	1,0	1,0	0,0
144.0	ASISTENT MEDICAL	PL	1,0	PRINCIPAL	1,0	1,0	0,0
145.0	ASISTENT MEDICAL	PL	1,0	PRINCIPAL	1,0	1,0	0,0
<b>TOTAL PERS.MEDIU BIBERONERIE</b>			<b>5,0</b>		<b>5,0</b>	<b>5,0</b>	<b>0,0</b>
146.0	REGISTRATOR MEDICAL	M	1,0		1,0	0,0	1,0
<b>TOTAL PERS.MEDIU POST FIX</b>			<b>1,0</b>		<b>1,0</b>	<b>0,0</b>	<b>1,0</b>
147.0	INFIRMIERA	G	1,0		1,0	1,0	0,0
148.0	INFIRMIERA	G	1,0		1,0	1,0	0,0
149.0	INFIRMIERA	G	1,0		1,0	1,0	0,0
150.0	INFIRMIERA	G	1,0		1,0	1,0	0,0
151.0	INFIRMIERA	G	1,0		1,0	1,0	0,0
152.0	INFIRMIERA	G	1,0		1,0	1,0	0,0
153.0	INFIRMIERA	G	1,0		1,0	1,0	0,0
154.0	INFIRMIERA	G	1,0		1,0	1,0	0,0
155.0	INFIRMIERA	G	1,0		1,0	1,0	0,0
156.0	INFIRMIERA	G	1,0	DEBUTANT	1,0	0,0	1,0
<b>TOTAL INFIRMIERE</b>			<b>10,0</b>		<b>10,0</b>	<b>9,0</b>	<b>1,0</b>
157.0	INGRIJITOARE	G	1,0		1,0	1,0	0,0
158.0	INGRIJITOARE	G	1,0		1,0	1,0	0,0
159.0	INGRIJITOARE	G	1,0		1,0	1,0	0,0
160.0	INGRIJITOARE	G	1,0		1,0	1,0	0,0
161.0	INGRIJITOARE	G	1,0		1,0	1,0	0,0
162.0	INGRIJITOARE	G	1,0		1,0	1,0	0,0
<b>TOTAL INGRJITOARE</b>			<b>6,0</b>		<b>6,0</b>	<b>6,0</b>	<b>0,0</b>
<b>COMPARTIMENT ATI - 10 PATURI</b>							
163.0	MEDIC	S	1,0	SPECIALIST	1,0	1,0	0,0
164.0	MEDIC	S	1,0	SPECIALIST	1,0	1,0	0,0
164.5	MEDIC - As. Univ.	S	0,5	SPECIALIST	0,5	0,0	0,5
<b>TOTAL PERS.SUPERIOR</b>			<b>2,5</b>		<b>2,5</b>	<b>2,0</b>	<b>0,5</b>
165.5	ASISTENT MEDICAL	S	1,0	PRINCIPAL	1,0	0,0	1,0
166.5	ASISTENT MEDICAL	S	1,0	PRINCIPAL	1,0	1,0	0,0
167.5	ASISTENT MEDICAL	S	1,0	PRINCIPAL	1,0	0,0	1,0
168.5	ASISTENT MEDICAL	S	1,0	PRINCIPAL	1,0	0,0	1,0
169.5	ASISTENT MEDICAL	S	1,0	PRINCIPAL	1,0	0,0	1,0
170.5	ASISTENT MEDICAL	S	1,0	PRINCIPAL	1,0	0,0	1,0
171.5	ASISTENT MEDICAL	S	1,0	PRINCIPAL	1,0	0,0	1,0
172.5	ASISTENT MEDICAL	PL	1,0	PRINCIPAL	1,0	0,0	1,0
<b>TOTAL PERS.MEDIU SANITAR TREI TURE</b>			<b>8,0</b>		<b>8,0</b>	<b>1,0</b>	<b>7,0</b>

Nr. Crt.	FUNCTIA,GRAD SAU TREAPTA	Nivel studii	Cuatum post	Grad sau Treapta	Numar posturi aprobate	Numar posturi ocupate	Numar posturi vacante
173.5	INFIRMIERA	G	1,0	DEBUTANT	1,0	0,0	1,0
174.5	INFIRMIERA	G	1,0	DEBUTANT	1,0	0,0	1,0
175.5	INFIRMIERA	G	1,0		1,0	0,0	1,0
176.5	INFIRMIERA	G	1,0		1,0	0,0	1,0
177.5	INFIRMIERA	G	1,0		1,0	0,0	1,0
178.5	INFIRMIERA	G	1,0		1,0	0,0	1,0
<b>TOTAL INFIRMIERE</b>			<b>6,0</b>		<b>6,0</b>	<b>0,0</b>	<b>6,0</b>
<b>CLINICA DE PNEUMOLOGIE I : 75 PATURI din care TBC 45 paturi</b>							
179.5	SEF SECTIE - MEDIC	S	1,0	PRIMAR	1,0	1,0	0,0
180.5	MEDIC	S	1,0	PRIMAR	1,0	1,0	0,0
181.5	MEDIC	S	1,0	PRIMAR	1,0	1,0	0,0
182.5	MEDIC	S	1,0	SPECIALIST	1,0	1,0	0,0
183.5	MEDIC	S	1,0	SPECIALIST	1,0	1,0	0,0
<b>TOTAL PERS. SANITAR SUPERIOR</b>			<b>5,0</b>		<b>5,0</b>	<b>5,0</b>	<b>0,0</b>
184.5	ASISTENT MEDICAL SEF	S	1,0	PRINCIPAL	1,0	1,0	0,0
185.5	ASISTENT MEDICAL	PL	1,0	PRINCIPAL	1,0	1,0	0,0
186.5	ASISTENT MEDICAL	S	1,0	PRINCIPAL	1,0	1,0	0,0
187.5	ASISTENT MEDICAL	PL	1,0		1,0	1,0	0,0
188.5	ASISTENT MEDICAL	PL	1,0	PRINCIPAL	1,0	1,0	0,0
189.5	ASISTENT MEDICAL	PL	1,0	PRINCIPAL	1,0	1,0	0,0
190.5	ASISTENT MEDICAL	PL	1,0	PRINCIPAL	1,0	1,0	0,0
191.5	KINOTERAPEUT	PL	1,0	KINETOTERAPEU	1,0	1,0	0,0
192.5	ASISTENT MEDICAL	PL	1,0	PRINCIPAL	1,0	1,0	0,0
193.5	ASISTENT MEDICAL	PL	1,0	PRINCIPAL	1,0	1,0	0,0
194.5	ASISTENT MEDICAL	S	1,0	PRINCIPAL	1,0	1,0	0,0
195.5	ASISTENT MEDICAL	S	1,0	PRINCIPAL	1,0	1,0	0,0
196.5	ASISTENT MEDICAL	PL	1,0	PRINCIPAL	1,0	1,0	0,0
197.5	ASISTENT MEDICAL	PL	1,0	PRINCIPAL	1,0	1,0	0,0
198.5	ASISTENT MEDICAL	PL	1,0	PRINCIPAL	1,0	1,0	0,0
199.5	ASISTENT MEDICAL	PL	1,0	PRINCIPAL	1,0	1,0	0,0
200.5	ASISTENT MEDICAL	PL	1,0	PRINCIPAL	1,0	1,0	0,0
201.5	ASISTENT MEDICAL	PL	1,0	PRINCIPAL	1,0	1,0	0,0
202.5	ASISTENT MEDICAL	PL	1,0	PRINCIPAL	1,0	1,0	0,0
<b>TOTAL PERS.SAN.MEDIU TREI TURE</b>			<b>19,0</b>		<b>19,0</b>	<b>19,0</b>	<b>0,0</b>
203.5	ASISTENT MEDICAL	PL	1,0	PRINCIPAL	1,0	1,0	0,0
204.5	REGISTRATOR MEDICAL	M	1,0	PRINCIPAL	1,0	1,0	0,0
<b>TOTAL PERSONAL MED.POST FIX</b>			<b>2,0</b>		<b>2,0</b>	<b>2,0</b>	<b>0,0</b>
205.5	INFIRMIERA	G	1,0		1,0	1,0	0,0
206.5	INFIRMIERA	G	1,0		1,0	0,0	1,0
207.5	INFIRMIERA	G	1,0		1,0	1,0	0,0
208.5	INFIRMIERA	G	1,0		1,0	1,0	0,0
209.5	INFIRMIERA	G	1,0		1,0	1,0	0,0
210.5	INFIRMIERA	G	1,0		1,0	1,0	0,0
211.5	INFIRMIERA	G	1,0		1,0	1,0	0,0
212.5	INFIRMIERA	G	1,0		1,0	1,0	0,0
213.5	INFIRMIERA	G	1,0		1,0	1,0	0,0
<b>TOTAL INFIRMIERE</b>			<b>9,0</b>		<b>9,0</b>	<b>8,0</b>	<b>1,0</b>
214.5	INGRIJITOARE	G	1,0		1,0	0,0	1,0
<b>TOTAL INGRIJITOARE</b>			<b>1,0</b>		<b>1,0</b>	<b>0,0</b>	<b>1,0</b>
<b>COMPARTIMENT ENDOSCOPIE BRONSICA</b>							
Activitatea este asigurata de personalul unitatii							
<b>CLINICA DE PNEUMOLOGIE II : 75 PATURI din care TBC 45 paturi</b>							
215.5	SEF SECTIE - MEDIC -conf.univ.	S	1,0	PRIMAR	1,0	1,0	0,0
216.5	MEDIC	S	1,0	PRIMAR	1,0	0,0	1,0
217.5	MEDIC	S	1,0	PRIMAR	1,0	1,0	0,0
218.5	MEDIC	S	1,0	PRIMAR	1,0	1,0	0,0
219.0	MEDIC - As. Univ.	S	0,5	SPECIALIST	0,5	0,5	0,0
220.0	MEDIC	S	1,0	SPECIALIST	1,0	1,0	0,0
<b>TOTAL PERS.SANIT.SUPERIOR</b>			<b>5,5</b>		<b>5,5</b>	<b>4,5</b>	<b>1,0</b>
221.0	ASISTENT MEDICAL SEF	S	1,0	PRINCIPAL	1,0	0,0	1,0
222.0	ASISTENT MEDICAL	PL	1,0	PRINCIPAL	1,0	1,0	0,0
223.0	ASISTENT MEDICAL	PL	1,0	PRINCIPAL	1,0	1,0	0,0
224.0	ASISTENT MEDICAL	S	1,0	PRINCIPAL	1,0	1,0	0,0
225.0	ASISTENT MEDICAL	PL	1,0	PRINCIPAL	1,0	1,0	0,0
226.0	ASISTENT MEDICAL	S	1,0	PRINCIPAL	1,0	1,0	0,0
227.0	ASISTENT MEDICAL	PL	1,0	PRINCIPAL	1,0	1,0	0,0
228.0	ASISTENT MEDICAL	PL	1,0	PRINCIPAL	1,0	1,0	0,0
229.0	ASISTENT MEDICAL	S	1,0	PRINCIPAL	1,0	1,0	0,0
230.0	ASISTENT MEDICAL	(S)	1,0		1,0	1,0	0,0
231.0	ASISTENT MEDICAL	S	1,0	PRINCIPAL	1,0	1,0	0,0
232.0	ASISTENT MEDICAL	PL	1,0	PRINCIPAL	1,0	1,0	0,0
233.0	ASISTENT MEDICAL	PL	1,0	PRINCIPAL	1,0	1,0	0,0
234.0	ASISTENT MEDICAL	S	1,0	PRINCIPAL	1,0	1,0	0,0

Nr. Crt.	FUNCTIA,GRAD SAU TREAPTA	Nivel studii	Cuatum post	Grad sau Treapta	Numar posturi aprobate	Numar posturi ocupate	Numar posturi vacante
235.0	ASISTENT MEDICAL	PL	1,0	PRINCIPAL	1,0	1,0	0,0
236.0	ASISTENT MEDICAL	PL	1,0	PRINCIPAL	1,0	1,0	0,0
<b>TOTAL PERS.MED.TREI TURE</b>			<b>16,0</b>		<b>16,0</b>	<b>15,0</b>	<b>1,0</b>
237.0	ASISTENT MEDICAL	PL	1,0	PRINCIPAL	1,0	1,0	0,0
238.0	ASISTENT MEDICAL	PL	1,0	PRINCIPAL	1,0	1,0	0,0
239.0	ASISTENT MEDICAL	PL	1,0	PRINCIPAL	1,0	1,0	0,0
240.0	REGISTRATOR MEDICAL	M	1,0	PRINCIPAL	1,0	1,0	0,0
<b>TOTAL PERS.MED.POST FIX</b>			<b>4,0</b>		<b>4,0</b>	<b>4,0</b>	<b>0,0</b>
241.0	INFIRMIERA	G	1,0		1,0	0,0	1,0
242.0	INFIRMIERA	G	1,0		1,0	1,0	0,0
243.0	INFIRMIERA	G	1,0		1,0	1,0	0,0
244.0	INFIRMIERA	G	1,0		1,0	1,0	0,0
245.0	INFIRMIERA	G	1,0		1,0	1,0	0,0
246.0	INFIRMIERA	G	1,0		1,0	1,0	0,0
<b>TOTAL INFIRMIERE</b>			<b>6,0</b>		<b>6,0</b>	<b>5,0</b>	<b>1,0</b>
247.0	INGRIJITOARE	G	1,0		1,0	1,0	0,0
248.0	INGRIJITOARE	G	1,0		1,0	1,0	0,0
<b>TOTAL INGRIJITOARE</b>			<b>2,0</b>		<b>2,0</b>	<b>2,0</b>	<b>0,0</b>
<b>CLINICA DE PNEUMOLOGIE COPII : 45 PATURI din care TBC 35 paturi</b>							
249.0	SEF SECTIE - MEDIC	S	1,0	PRINCIPAL	1,0	1,0	0,0
250.0	MEDIC	S	1,0	PRINCIPAL	1,0	1,0	0,0
251.0	MEDIC	S	1,0	PRINCIPAL	1,0	1,0	0,0
<b>TOTAL MEDICI</b>			<b>3,0</b>		<b>3,0</b>	<b>3,0</b>	<b>0,0</b>
252.0	ASISTENT MEDICAL SEF	S	1,0	PRINCIPAL	1,0	1,0	0,0
253.0	ASISTENT MEDICAL	S	1,0		1,0	1,0	0,0
254.0	ASISTENT MEDICAL	PL	1,0	PRINCIPAL	1,0	1,0	0,0
255.0	ASISTENT MEDICAL	PL	1,0	PRINCIPAL	1,0	1,0	0,0
256.0	ASISTENT MEDICAL	S	1,0	PRINCIPAL	1,0	1,0	0,0
257.0	ASISTENT MEDICAL	S	1,0	PRINCIPAL	1,0	1,0	0,0
258.0	ASISTENT MEDICAL	PL	1,0	PRINCIPAL	1,0	1,0	0,0
259.0	ASISTENT MEDICAL	S	1,0	PRINCIPAL	1,0	1,0	0,0
260.0	ASISTENT MEDICAL	S	1,0	PRINCIPAL	1,0	1,0	0,0
261.0	ASISTENT MEDICAL	S	1,0	PRINCIPAL	1,0	1,0	0,0
262.0	ASISTENT MEDICAL	S	1,0	PRINCIPAL	1,0	1,0	0,0
<b>TOTAL PERS.MED.TREI TURE</b>			<b>11,0</b>		<b>11,0</b>	<b>11,0</b>	<b>0,0</b>
263.0	INFIRMIERA	G	1,0		1,0	1,0	0,0
264.0	INFIRMIERA	G	1,0		1,0	0,0	1,0
265.0	INFIRMIERA	G	1,0		1,0	1,0	0,0
266.0	INFIRMIERA	G	1,0		1,0	1,0	0,0
267.0	INFIRMIERA	G	1,0		1,0	1,0	0,0
268.0	INFIRMIERA	G	1,0		1,0	1,0	0,0
269.0	INFIRMIERA	G	1,0		1,0	1,0	0,0
<b>TOTAL INFIRMIERE</b>			<b>7,0</b>		<b>7,0</b>	<b>6,0</b>	<b>1,0</b>
270.0	INGRIJITOARE	G	1,0		1,0	1,0	0,0
271.0	INGRIJITOARE	G	1,0		1,0	1,0	0,0
<b>TOTAL INGRIJITOARE CURATENIE</b>			<b>2,0</b>		<b>2,0</b>	<b>2,0</b>	<b>0,0</b>
<b>COMPARTIMENT STERILIZARE -DISPENSARIZARE HEPATITA</b>							
272.0	ASISTENT MEDICAL	PL	1,0	PRINCIPAL	1,0	1,0	0,0
273.0	ASISTENT MEDICAL	PL	1,0	PRINCIPAL	1,0	0,0	1,0
<b>TOTAL PERS.MED.</b>			<b>2,0</b>		<b>2,0</b>	<b>1,0</b>	<b>1,0</b>
<b>CABINET ANTIRABIC</b>							
274.0	ASISTENT MEDICAL	PL	1,0		1,0	0,0	1,0
<b>TOTAL PERS.MED.</b>			<b>1,0</b>		<b>1,0</b>	<b>0,0</b>	<b>1,0</b>
<b>CABINET O.R.L.</b>							
275.0	MEDIC	S	1,0	PRIMAR	1,0	1,0	0,0
<b>TOTAL PERSONAL SANITAR SUPERIOR</b>			<b>1,0</b>		<b>1,0</b>	<b>1,0</b>	<b>0,0</b>
276.0	ASISTENT MEDICAL	S	1,0	PRINCIPAL	1,0	1,0	0,0
<b>TOTAL PERSONAL MEDIU</b>			<b>1,0</b>		<b>1,0</b>	<b>1,0</b>	<b>0,0</b>
<b>CABINET CARDIOLOGIE</b>							
277.0	MEDIC	S	1,0	SPECIALIST	1,0	1,0	0,0
<b>TOTAL PERSONAL SANITAR SUPERIOR</b>			<b>1,0</b>		<b>1,0</b>	<b>1,0</b>	<b>0,0</b>
278.0	ASISTENT MEDICAL	PL	1,0	PRINCIPAL	1,0	1,0	0,0
<b>TOTAL PERS. MED</b>			<b>1,0</b>		<b>1,0</b>	<b>1,0</b>	<b>0,0</b>
<b>SPITALIZARE DE ZI HIV/SIDA 25 PATURI</b>							
278.5	MEDIC - Prof. Univ.	S	0,5	PRIMAR	0,5	0,5	0,0
279.5	MEDIC SEF - Sef Lucrari	S	1,0	PRIMAR	1,0	1,0	0,0
<b>TOTAL PERSONAL SANITAR SUPERIOR</b>			<b>1,5</b>		<b>1,5</b>	<b>1,5</b>	<b>0,0</b>
280.5	PSIHOLOG	S	1,0	PRINCIPAL	1,0	1,0	0,0
281.5	ASISTENT MEDICA SOCIAL	S	1,0	PRINCIPAL	1,0	1,0	0,0



Nr. Crt.	FUNCTIA,GRAD SAU TREAPTA	Nivel studii	Cuatum post	Grad sau Treapta	Numar posturi aprobate	Numar posturi ocupate	Numar posturi vacante
<b>TOTAL ALT PERSONAL SANITAR SUPERIOR</b>			<b>2,0</b>		<b>2,0</b>	<b>2,0</b>	<b>0,0</b>
282.5	ASISTENT MEDICAL SEF	S	1,0	PRINCIPAL	1,0	0,0	1,0
283.5	ASISTENT MEDICAL	S	1,0	PRINCIPAL	1,0	1,0	0,0
284.5	ASISTENT MEDICAL	S	1,0	PRINCIPAL	1,0	1,0	0,0
285.5	ASISTENT MEDICAL	PL	1,0	PRINCIPAL	1,0	1,0	0,0
286.5	REGISTRATOR MEDICAL	M	1,0		1,0	1,0	0,0
<b>TOTAL PERS.SAN MEDIU POST FIX</b>			<b>5,0</b>		<b>5,0</b>	<b>4,0</b>	<b>1,0</b>
<b>CABINET DERMATOLOGIE HIV/SIDA</b>							
287.5	MEDIC	S	1,0	PRIMAR	1,0	1,0	0,0
288.5	ASISTENT MEDICAL	PL	1,0		1,0	0,0	1,0
<b>TOTAL PERSONAL SANITAR SUPERIOR</b>			<b>2,0</b>		<b>2,0</b>	<b>1,0</b>	<b>1,0</b>
<b>CABINET STOMATOLOGIE HIV/SIDA</b>							
289.5	MEDIC	S	1,0	STOMATOLOG	1,0	1,0	0,0
290.5	MEDIC	S	1,0	STOMATOLOG	1,0	1,0	0,0
291.5	ASISTENT MEDICAL	PL	1,0		1,0	0,0	1,0
<b>TOTAL PERSONAL SANITAR SUPERIOR</b>			<b>3,0</b>		<b>3,0</b>	<b>2,0</b>	<b>1,0</b>
<b>DISPENSAR T.B.C.</b>							
292.5	MEDIC	S	1,0	PRIMAR	1,0	1,0	0,0
293.5	MEDIC	S	1,0	PRIMAR	1,0	1,0	0,0
294.5	MEDIC	S	1,0	SPECIALIST	1,0	1,0	0,0
295.5	MEDIC coordonator	S	1,0	PRIMAR	1,0	1,0	0,0
296.5	MEDIC	S	1,0	PRIMAR	1,0	1,0	0,0
297.5	MEDIC	S	1,0	PRIMAR	1,0	1,0	0,0
298.5	MEDIC	S	1,0	PRIMAR	1,0	1,0	0,0
<b>TOTAL PERS.SAN.SUP</b>			<b>7,0</b>		<b>7,0</b>	<b>7,0</b>	<b>0,0</b>
299.5	ASISTENT MEDICAL	PL	1,0	PRINCIPAL	1,0	1,0	0,0
300.5	ASISTENT MEDICAL	S	1,0	PRINCIPAL	1,0	1,0	0,0
301.5	ASISTENT MEDICAL	S	1,0	PRINCIPAL	1,0	1,0	0,0
302.5	ASISTENT MEDICAL	PL	1,0	PRINCIPAL	1,0	1,0	0,0
303.5	ASISTENT MEDICAL	PL	1,0	PRINCIPAL	1,0	1,0	0,0
304.5	ASISTENT MEDICAL	S	1,0	PRINCIPAL	1,0	1,0	0,0
305.5	ASISTENT MEDICAL	S	1,0	PRINCIPAL	1,0	1,0	0,0
306.5	ASISTENT MEDICAL	S	1,0	PRINCIPAL	1,0	1,0	0,0
307.5	ASISTENT MEDICAL	PL	1,0	PRINCIPAL	1,0	1,0	0,0
308.5	ASISTENT MEDICAL	S	1,0	PRINCIPAL	1,0	1,0	0,0
309.5	REGISTRATOR MEDICAL	M	1,0	PRINCIPAL	1,0	1,0	0,0
310.5	REGISTRATOR MEDICAL	M	1,0	PRINCIPAL	1,0	1,0	0,0
311.5	ASISTENT MEDICAL	PL	1,0	PRINCIPAL	1,0	1,0	0,0
<b>TOTAL PERS.SANIT.MEDIU</b>			<b>13,0</b>		<b>13,0</b>	<b>13,0</b>	<b>0,0</b>
312.5	INGRIJITOARE	G	1,0		1,0	0,0	1,0
313.5	INGRIJITOARE	G	1,0		1,0	1,0	0,0
<b>TOTAL INGRIJITOARE</b>			<b>2,0</b>		<b>2,0</b>	<b>1,0</b>	<b>1,0</b>
<b>CABINET EXPLORARI FUNCTIONALE</b>							
314.5	ASISTENT MEDICAL	PL	1,0	PRINCIPAL	1,0	1,0	0,0
<b>TOTAL EXP.FUNCT</b>			<b>1,0</b>		<b>1,0</b>	<b>1,0</b>	<b>0,0</b>
<b>LABORATOR BK</b>							
315.5	MEDIC	S	1,0	SPECIALIST	1,0	1,0	0,0
316.5	MEDIC	S	1,0	SPECIALIST	1,0	0,0	1,0
<b>TOTAL PERS.SAN.SUP</b>			<b>2,0</b>		<b>2,0</b>	<b>1,0</b>	<b>1,0</b>
317.5	BIOLOG	S	1,0	PRINCIPAL	1,0	1,0	0,0
318.5	BIOLOG	S	1,0	SPECIALIST	1,0	1,0	0,0
<b>TOTAL ALT PERS.SUPERIOR</b>			<b>2,0</b>		<b>2,0</b>	<b>2,0</b>	<b>0,0</b>
319.5	ASISTENT LABORATOR	PL	1,0	PRINCIPAL	1,0	1,0	0,0
320.5	ASISTENT LABORATOR	PL	1,0	PRINCIPAL	1,0	1,0	0,0
<b>TOTAL PERS.SANIT. POST FIX</b>			<b>2,0</b>		<b>2,0</b>	<b>2,0</b>	<b>0,0</b>
321.5	INGRIJITOARE	G	1,0		1,0	1,0	0,0
<b>TOTAL INGRIJITOARE</b>			<b>1,0</b>		<b>1,0</b>	<b>1,0</b>	<b>0,0</b>
<b>LABORATOR RADIOLOGIE TBC</b>							
322.5	MEDIC	S	1,0	SPECIALIST	1,0	1,0	0,0
<b>TOTAL PERSONAL SANITAR SUPERIOR</b>			<b>1,0</b>		<b>1,0</b>	<b>1,0</b>	<b>0,0</b>
323.5	ASISTENT RADIOLOGIE	PL	1,0	PRINCIPAL	1,0	1,0	0,0
324.5	ASISTENT RADIOLOGIE	PL	1,0	PRINCIPAL	1,0	1,0	0,0
325.5	ASISTENT RADIOLOGIE	PL	1,0	PRINCIPAL	1,0	1,0	0,0
326.5	ASISTENT RADIOLOGIE	PL	1,0	PRINCIPAL	1,0	1,0	0,0
327.5	ASISTENT RADIOLOGIE	PL	1,0	PRINCIPAL	1,0	1,0	0,0
328.5	ASISTENT RADIOLOGIE	PL	1,0	PRINCIPAL	1,0	1,0	0,0
329.5	ASISTENT RADIOLOGIE	M	1,0	PRINCIPAL	1,0	1,0	0,0
<b>TOTAL PERS.MED.RADIOLOGIE*</b>			<b>7,0</b>		<b>7,0</b>	<b>7,0</b>	<b>0,0</b>
<b>LABORATOR CLINIC ANALIZE MEDICALE</b>							
330.5	SEF LABORATOR -MEDIC	S	1,0	PRIMAR	1,0	1,0	0,0

Nr. Crt.	FUNCTIA,GRAD SAU TREAPTA	Nivel studii	Cuatum post	Grad sau Treapta	Numar posturi aprobate	Numar posturi ocupate	Numar posturi vacante
331.5	MEDIC	S	1,0	PRIMAR	1,0	1,0	0,0
332.5	MEDIC	S	1,0	PRIMAR	1,0	1,0	0,0
333.5	MEDIC	S	1,0	PRIMAR	1,0	1,0	0,0
334.5	MEDIC	S	1,0	PRIMAR	1,0	1,0	0,0
<b>TOTAL PERSONAL SANITAR SUPERIOR</b>			<b>5,0</b>		<b>5,0</b>	<b>5,0</b>	<b>0,0</b>
335.5	BIOLOG	S	1,0	PRINCIPAL	1,0	0,0	1,0
336.5	BIOLOG	S	1,0	PRINCIPAL	1,0	0,0	1,0
337.5	BIOLOG	S	1,0	PRINCIPAL	1,0	0,0	1,0
338.5	BIOLOG	S	1,0	PRINCIPAL	1,0	1,0	0,0
<b>TOTAL ALT PERS.SUPERIOR</b>			<b>4,0</b>		<b>4,0</b>	<b>1,0</b>	<b>3,0</b>
339.5	ASISTENT LABORATOR	PL	1,0	PRINCIPAL	1,0	0,0	1,0
340.5	ASISTENT LABORATOR	PL	1,0	PRINCIPAL	1,0	1,0	0,0
341.5	ASISTENT LABORATOR	PL	1,0	PRINCIPAL	1,0	1,0	0,0
342.5	ASISTENT LABORATOR	PL	1,0	PRINCIPAL	1,0	1,0	0,0
343.5	ASISTENT LABORATOR	PL	1,0	PRINCIPAL	1,0	1,0	0,0
344.5	ASISTENT LABORATOR	PL	1,0	PRINCIPAL	1,0	1,0	0,0
345.5	ASISTENT LABORATOR	PL	1,0	PRINCIPAL	1,0	1,0	0,0
346.5	ASISTENT LABORATOR	PL	1,0	PRINCIPAL	1,0	1,0	0,0
347.5	ASISTENT LABORATOR	PL	1,0	PRINCIPAL	1,0	1,0	0,0
348.5	ASISTENT LABORATOR	PL	1,0	PRINCIPAL	1,0	0,0	1,0
349.5	ASISTENT LABORATOR	PL	1,0	PRINCIPAL	1,0	1,0	0,0
350.5	ASISTENT LABORATOR	PL	1,0	PRINCIPAL	1,0	1,0	0,0
351.5	ASISTENT LABORATOR	M	1,0	PRINCIPAL	1,0	1,0	0,0
352.5	ASISTENT LABORATOR	M	1,0	PRINCIPAL	1,0	1,0	0,0
353.5	ASISTENT LABORATOR	M	1,0	PRINCIPAL	1,0	1,0	0,0
354.5	ASISTENT LABORATOR	PL	1,0	PRINCIPAL	1,0	1,0	0,0
355.5	ASISTENT LABORATOR	PL	1,0	PRINCIPAL	1,0	1,0	0,0
356.5	REGISTRATOR MEDICAL	M	1,0		1,0	1,0	0,0
<b>TOTAL PERS.SANITAR MEDIU</b>			<b>18,0</b>		<b>18,0</b>	<b>16,0</b>	<b>2,0</b>
357.5	INGRIJITOARE	G	1,0		1,0	1,0	0,0
358.5	INGRIJITOARE	G	1,0		1,0	0,0	1,0
<b>TOTAL INGRIJITOARE CURATENIE</b>			<b>2,0</b>		<b>2,0</b>	<b>1,0</b>	<b>1,0</b>
<b>LABORATOR RADIOLOGIE</b>							
359.5	SEF LABORATOR - MEDIC	S	1,0	PRIMAR	1,0	1,0	0,0
360.5	MEDIC	S	1,0	PRIMAR	1,0	1,0	0,0
<b>TOTAL PERS.SANIT.SUPERIOR</b>			<b>2,0</b>		<b>2,0</b>	<b>2,0</b>	<b>0,0</b>
361.5	FIZICIAN	S	1,0	FIZICIAN	1,0	1,0	0,0
<b>TOTAL ALT PERS. SANIT. SUPERIOR</b>			<b>1,0</b>		<b>1,0</b>	<b>1,0</b>	<b>0,0</b>
362.5	ASISTENT RADIOLOGIE	M	1,0	PRINCIPAL	1,0	0,0	1,0
363.5	ASISTENT RADIOLOGIE	PL	1,0	PRINCIPAL	1,0	1,0	0,0
364.5	ASISTENT RADIOLOGIE	PL	1,0	PRINCIPAL	1,0	1,0	0,0
<b>TOTAL PERS.SANIT.MEDIU</b>			<b>3,0</b>		<b>3,0</b>	<b>2,0</b>	<b>1,0</b>
365.5	INGRIJITOARE	G	1,0		1,0	1,0	0,0
<b>TOTAL INGRIJITOARE</b>			<b>1,0</b>		<b>1,0</b>	<b>1,0</b>	<b>0,0</b>
<b>LABORATOR ANOMIE PATOLOGICA</b>							
366.5	MEDIC	S	1,0	PRIMAR	1,0	1,0	0,0
367.0	MEDIC - As. Univ	S	0,5	SPECIALIST	0,5	0,5	0,0
<b>TOTAL PERS.SANIT.SUPERIOR</b>			<b>1,5</b>		<b>1,5</b>	<b>1,5</b>	<b>0,0</b>
368.0	ASISTENT LABORATOR	PL	1,0	PRINCIPAL	1,0	0,0	1,0
369.0	ASISTENT LABORATOR	S	1,0	PRINCIPAL	1,0	1,0	0,0
370.0	ASISTENT LABORATOR autopsier	PL	1,0	PRINCIPAL	1,0	1,0	0,0
<b>TOTAL PERS.MED.</b>			<b>3,0</b>		<b>3,0</b>	<b>2,0</b>	<b>1,0</b>
371.0	INGRIJITOARE	G	1,0		1,0	1,0	0,0
<b>TOTAL INGRIJITOARE</b>			<b>1,0</b>		<b>1,0</b>	<b>1,0</b>	<b>0,0</b>
<b>MEDIC INTREPRINDERE</b>							
372.0	MEDIC	S	1,0	MEDIC	1,0	1,0	0,0
<b>TOTAL MED.INTREPRINDERE</b>			<b>1,0</b>		<b>1,0</b>	<b>1,0</b>	<b>0,0</b>
<b>FARMACIE-8 posturi</b>							
373.0	FARMACIST DIRIGINTE	S	1,0	PRINCIPAL	1,0	0,0	1,0
374.0	FARMACIST	S	1,0	PRINCIPAL	1,0	1,0	0,0
375.0	FARMACIST	S	1,0	PRINCIPAL	1,0	1,0	0,0
376.0	FARMACIST	S	1,0		1,0	0,0	1,0
<b>TOTAL FARMACISTI</b>			<b>4,0</b>		<b>4,0</b>	<b>2,0</b>	<b>2,0</b>
377.0	ASISTENT FARMACIE	PL	1,0	DEBUTANT	1,0	0,0	1,0
378.0	ASISTENT FARMACIE	PL	1,0	PRINCIPAL	1,0	1,0	0,0
379.0	ASISTENT FARMACIE	PL	1,0	PRINCIPAL	1,0	1,0	0,0
380.0	ASISTENT FARMACIE	PL	1,0	GENERALIST	1,0	0,0	1,0
<b>TOTAL PERSONAL MEDIU</b>			<b>4,0</b>		<b>4,0</b>	<b>2,0</b>	<b>2,0</b>
<b>APARAT FUNCTIONAL</b>							
<b>BIROUL R.U.O.N.S.</b>							

Nr. Crt.	FUNCTIA,GRAD SAU TREAPTA	Nivel studii	Cuatum post	Grad sau Treapta	Numar posturi aprobate	Numar posturi ocupate	Numar posturi vacante
381,0	ŞEF BIROU (CONSILIER JURIDIC)	S	1,0	IA	1,0	1,0	0,0
382,0	ECONOMIST	S	1,0	II	1,0	0,0	1,0
383,0	ECONOMIST	S	1,0	II	1,0	1,0	0,0
384,0	ECONOMIST	S	1,0	DEBUTANT	1,0	0,0	1,0
<b>TOTAL BIROUL R.U.O.N.S</b>			<b>4,0</b>		<b>4,0</b>	<b>2,0</b>	<b>2,0</b>
<b>BIROU INFORMATICĂ</b>							
385,0	ŞEF BIROU ( ANALIST PROGRAMATOR)	S	1,0	IA	1,0	1,0	0,0
386,0	ANALIST PROGRAMATOR	S	1,0	IA	1,0	1,0	0,0
387,0	ANALIST PROGRAMATOR	S	1,0	IA	1,0	1,0	0,0
<b>TOTAL INFORMATICĂ</b>			<b>3,0</b>		<b>3,0</b>	<b>3,0</b>	<b>0,0</b>
<b>SERVICIU STATISTICĂ ŞI EVALUARE MEDICALĂ</b>							
388,0	ŞEF SERVICIU (ECONOMIST)	S	1,0	IA	1,0	0,0	1,0
389,0	OPERATOR CONTROLOR DATE	M	1,0	I	1,0	1,0	0,0
390,0	OPERATOR CONTROLOR DATE	M	1,0	I	1,0	1,0	0,0
391,0	ECONOMIST	S	1,0	IA	1,0	1,0	0,0
392,0	REFERENT	M	1,0	IA	1,0	1,0	0,0
393,0	STATISTICIAN MEDICAL	M	1,0	DEBUTANT	1,0	0,0	1,0
<b>TOTAL SERVICIU STATISTICĂ ŞI EVALUARE MEDICALĂ</b>			<b>6,0</b>		<b>6,0</b>	<b>4,0</b>	<b>2,0</b>
<b>SERVICIU MANAGEMENT AL CALITĂȚII SERVICIILOR MEDICALE</b>							
394,0	ŞEF SERVICIU (ECONOMIST)	S	1,0	IA	1,0	0,0	1,0
395,0	ECONOMIST	S	1,0	IA	1,0	1,0	0,0
396,0	ECONOMIST	S	1,0	IA	1,0	1,0	0,0
397,0	MEDIC (MEDICINA GENERALA)	S	1,0	SPECIALIST	1,0	0,0	1,0
398,0	CONSILIER JURIDIC	S	1,0	II	1,0	1,0	0,0
399,0	INFORMATICIAN	S	1,0	DEBUTANT	1,0	0,0	1,0
<b>TOTAL SERVICIU MANAGEMENT AL CALITĂȚII SERVICIILOR MEDICALE</b>			<b>6,0</b>		<b>6,0</b>	<b>3,0</b>	<b>3,0</b>
<b>COMPARTIMENT JURIDIC</b>							
400,0	CONSILIER JURIDIC	S	1,0	IA	1,0	1,0	0,0
<b>TOTAL PERS SUPERIOR</b>			<b>1,0</b>		<b>1,0</b>	<b>1,0</b>	<b>0,0</b>
<b>COMPARTIMENT AUDIT PUBLIC INTERN</b>							
401,0	AUDITOR ECONOMIST	S	1,0	IA	1,0	1,0	0,0
<b>TOTAL COMPARTIMENT AUDIT PUBLIC INTERN</b>			<b>1,0</b>		<b>1,0</b>	<b>1,0</b>	<b>0,0</b>
<b>COMPARTIMENT CONFESIONAL</b>							
402,0	PREOT	S	1,0	I	1,0	1,0	0,0
<b>TOTAL COMPARTIMENT CONFESIONAL</b>			<b>1,0</b>		<b>1,0</b>	<b>1,0</b>	<b>0,0</b>
<b>SERVICIUL FINANCIAR-CONTABILITATE - 5 posturi</b>							
403,0	ŞEF SERVICIU (ECONOMIST)	S	1,0	IA	1,0	0,0	1,0
404,0	ECONOMIST	S	1,0	IA	1,0	1,0	0,0
405,0	ECONOMIST	S	1,0	IA	1,0	1,0	0,0
406,0	ECONOMIST	S	1,0	IA	1,0	1,0	0,0
407,0	ECONOMIST	S	1,0	IA	1,0	1,0	0,0
<b>TOTAL SERVICIU FINANCIAR CONTABILITATE</b>			<b>5,0</b>		<b>5,0</b>	<b>4,0</b>	<b>1,0</b>
<b>BIROU APROVIZIONARE</b>							
408,0	ŞEF BIROU (ECONOMIST)	S	1,0	IA	1,0	1,0	0,0
409,0	ŞEF DEPOZIT MAGAZIONER	M	1,0	I	1,0	1,0	0,0
410,0	ECONOMIST	S	1,0	II	1,0	1,0	0,0
<b>TOTAL BIROU APROVIZIONARE</b>			<b>3,0</b>		<b>3,0</b>	<b>3,0</b>	<b>0,0</b>
<b>BIROUL ACHIZIȚII PUBLICE, CONTRACTARE</b>							
411,0	ŞEF BIROU (ECONOMIST)	S	1,0	IA	1,0	1,0	0,0
412,0	ECONOMIST	S	1,0	IA	1,0	1,0	0,0
413,0	CONSILIER JURIDIC	S	1,0	IA	1,0	1,0	0,0
<b>TOTAL BIROU ACHIZIȚII PUBLICE, CONTRACTARE</b>			<b>3,0</b>		<b>3,0</b>	<b>3,0</b>	<b>0,0</b>
<b>BIROU ADMINISTRATIV-TRANSPORTURI, SECURITATEA MUNCII, PSI, PROTECTIE CIVILĂ ŞI SITUAȚII DE URGENȚĂ</b>							
414,0	ŞEF BIROU (INGINER)	S	1,0	IA	1,0	0,0	1,0
415,0	INGINER	S	1,0	IA	1,0	1,0	0,0
416,0	CASIER	M	1,0	I	1,0	1,0	0,0
<b>TOTAL BIROU ADMINISTRATIV-TRANSPORTURI SECURITATEA MUNCII, PSI, PROTECTIE CIVILĂ ŞI SITUAȚII DE URGENȚĂ</b>			<b>3,0</b>		<b>3,0</b>	<b>2,0</b>	<b>1,0</b>
<b>COMPARTIMENT TRANSPORTURI</b>							
417,0	MUNCITOR (LACATAUS MECANIC)	M	1,0	II	1,0	1,0	0,0
418,0	SOFER	M	1,0	II	1,0	1,0	0,0
419,0	SOFER	M	1,0	VI	1,0	0,0	1,0
420,0	SOFER	M	1,0	II	1,0	1,0	0,0
421,0	SOFER	M	1,0	II	1,0	1,0	0,0
422,0	SOFER	M	1,0	II	1,0	1,0	0,0
<b>TOTAL COMPARTIMENT TRANSPORTURI</b>			<b>6,0</b>		<b>6,0</b>	<b>5,0</b>	<b>1,0</b>
<b>BLOC LENJERIE SPALATORIE</b>							
423,0	MUNCITOR (LUCRATOR COMERCIAL)	M	1,0	VI	1,0	0,0	1,0

Nr. Crt.	FUNCTIA,GRAD SAU TREAPTA	Nivel studii	Cuatum post	Grad sau Treapta	Numar posturi aprobate	Numar posturi ocupate	Numar posturi vacante
424.0	SPALATOREASA	M	1,0	II	1,0	1,0	0,0
425.0	SPALATOREASA	M	1,0	II	1,0	1,0	0,0
426.0	SPALATOREASA	M	1,0	II	1,0	1,0	0,0
427.0	SPALATOREASA	M	1,0	II	1,0	1,0	0,0
428.0	SPALATOREASA	M	1,0	II	1,0	1,0	0,0
429.0	MUNCITOR (LENJEREASA)	M	1,0	II	1,0	1,0	0,0
<b>TOTAL BLOC LENJERIE SPALATORIE</b>					<b>7,0</b>	<b>6,0</b>	<b>1,0</b>
<b>DESERVIRE</b>							
430.0	PORTAR - I	M	1,0	I	1,0	1,0	0,0
431.0	PORTAR - I	M	1,0	I	1,0	1,0	0,0
432.0	PORTAR - I	M	1,0	I	1,0	1,0	0,0
433.0	PORTAR - I (MUNCITOR I)	M	1,0	I	1,0	1,0	0,0
434.0	PORTAR - I (MUNCITOR I)	M	1,0	I	1,0	1,0	0,0
435.0	ARHIVAR I	M	1,0	I	1,0	1,0	0,0
436.0	CURIER I	M	1,0	I	1,0	0,0	1,0
<b>TOTAL DESERVIRE</b>					<b>7,0</b>	<b>6,0</b>	<b>1,0</b>
<b>COMPARTIMENT DIETETICA SI BLOC ALIMENTAR</b>							
437.0	ASISTENT MEDICAL	PL	1,0	PRINCIPAL	1,0	1,0	0,0
438.0	ASISTENT MEDICAL	PL	1,0	PRINCIPAL	1,0	1,0	0,0
439.0	MUNCITOR (BUCATAR)	M	1,0	II	1,0	1,0	0,0
440.0	MUNCITOR (BUCATAR)	M	1,0	II	1,0	1,0	0,0
441.0	MUNCITOR (BUCATAR)	M	1,0	II	1,0	1,0	0,0
442.0	MUNCITOR (BUCATAR)	M	1,0	II	1,0	1,0	0,0
443.0	MUNCITOR (BUCATAR)	M	1,0	II	1,0	1,0	0,0
444.0	MUNCITOR (BUCATAR)	M	1,0	II	1,0	1,0	0,0
445.0	MUNCITOR (BUCATAR)	M	1,0	II	1,0	1,0	0,0
446.0	MUNCITOR (BUCATAR)	M	1,0	II	1,0	1,0	0,0
447.0	MUNCITOR (BUCATAR)	M	1,0	II	1,0	1,0	0,0
<b>TOTAL COMPARTIMENT DIETETICA SI BLOC ALIMENTAR</b>					<b>11,0</b>	<b>11,0</b>	<b>0,0</b>
<b>COMPARTIMENT LIFTURI - CENTRALA TELEFONICA</b>							
448.0	MUNCITOR (ELECTRICIAN)	M	1,0	I	1,0	0,0	1,0
449.0	MUNCITOR (LIFTIER)	M	1,0	II	1,0	1,0	0,0
450.0	MUNCITOR (LIFTIER)	M	1,0	I	1,0	1,0	0,0
451.0	MUNCITOR (LIFTIER)	M	1,0	III	1,0	1,0	0,0
452.0	MUNCITOR (TELEFONIST)	M	1,0	I	1,0	1,0	0,0
453.0	MUNCITOR (TELEFONIST)	M	1,0	I	1,0	1,0	0,0
<b>TOTAL COMPARTIMENT LIFTURI - CENTRALA TELEFONICA</b>					<b>6,0</b>	<b>6,0</b>	<b>5,0</b>
<b>ACTIVITATE DE FRIZERIE</b>							
454.0	MUNCITOR (FRIZER)	M	1,0	II	1,0	1,0	0,0
<b>TOTAL FRIZERIE</b>					<b>1,0</b>	<b>1,0</b>	<b>0,0</b>
<b>INTRETINERE SPATII VERZI</b>							
455.0	MUNCITOR	M	1,0	V	1,0	0,0	1,0
<b>TOTAL INTRETINERE SPATII VERZI</b>					<b>1,0</b>	<b>0,0</b>	<b>1,0</b>
<b>APARATURA MEDICALA</b>							
456.0	TEHNICIAN APARATURA MEDICALA	PL	1,0	PRINCIPAL	1,0	1,0	0,0
<b>TOTAL APARATURA MEDICALA</b>					<b>1,0</b>	<b>1,0</b>	<b>0,0</b>
<b>COMPARTIMENT INTRETINERE CLADIRI, INSTALATII APA, OXIGEN , LUMINA SI INCALZIRE</b>							
457.0	MUNCITOR (INSTALATOR)	M	1,0	I	1,0	1,0	0,0
458.0	MUNCITOR (INSTALATOR)	M	1,0	I	1,0	1,0	0,0
459.0	MUNCITOR (ELECTRICIAN)	M	1,0	I	1,0	1,0	0,0
460.0	MUNCITOR (ELECTRICIAN)	M	1,0	I	1,0	1,0	0,0
461.0	MUNCITOR (LACATUS MECANIC)	M	1,0	I	1,0	1,0	0,0
462.0	MUNCITOR (LACATUS MECANIC)	M	1,0	I	1,0	1,0	0,0
463.0	MUNCITOR (LACATUS MECANIC)	M	1,0	III	1,0	1,0	0,0
464.0	MUNCITOR (LACATUS MECANIC)	M	1,0	I	1,0	1,0	0,0
465.0	MUNCITOR (SUDOR)	M	1,0	V	1,0	1,0	0,0
466.0	MUNCITOR (LACATUS MECANIC)	M	1,0	I	1,0	1,0	0,0
<b>TOTAL INTRETINERE CLADIRI, INSTALATII APA, OXIGEN , LUMINA SI</b>					<b>10,0</b>	<b>10,0</b>	<b>0,0</b>
<b>BIROU TEHNIC</b>							
467.0	SEF BIROU (INGINER)	S	1,0	IA	1,0	0,0	1,0
468.0	INGINER	S	1,0	IA	1,0	1,0	0,0
469.0	ECONOMIST	S	1,0	IA	1,0	1,0	0,0
<b>TOTAL BIROU TEHNIC</b>					<b>3,0</b>	<b>3,0</b>	<b>2,0</b>
<b>COMP. CLORINARE (EPURARE APE UZATE SI REZIDUALE)</b>							
470.0	SUBINGINER CHIMIST	SSD	1,0	SUBINGINER	1,0	0,0	1,0
<b>TOTAL COMP. CLORINARE (EPURARE APE UZATE SI REZIDUALE)</b>					<b>1,0</b>	<b>0,0</b>	<b>1,0</b>

Nr. Crt.	FUNCTIA,GRAD SAU TREAPTA	Nivel studii	Cuatum post	Grad sau Treapta	Numar posturi aprobate	Numar posturi ocupate	Numar posturi vacante
<b>EXPLOATARE CENTRALA TERMICA</b>							
471.0	MUNCITOR (FOCHIST)	M	1,0	I	1,0	1,0	0,0
472.0	MUNCITOR (FOCHIST)	M	1,0	I	1,0	1,0	0,0
473.0	MUNCITOR (FOCHIST)	M	1,0	I	1,0	1,0	0,0
474.0	MUNCITOR (FOCHIST)	M	1,0		1,0	0,0	1,0
475.0	MUNCITOR (FOCHIST)	M	1,0	I	1,0	1,0	0,0
<b>TOTAL EXPLOATARE CENTRALA TERMICA</b>			<b>5,0</b>		<b>5,0</b>	<b>4,0</b>	<b>1,0</b>
<b>TOTAL GENERAL</b>			<b>475,0</b>		<b>475,0</b>	<b>403,5</b>	<b>71,5</b>
* IN LABORATORUL DE RADIOLOGIE SUNT INCLUSI SI ASISTENTII DIN SPITAL SI DISPENSARUL TBC							